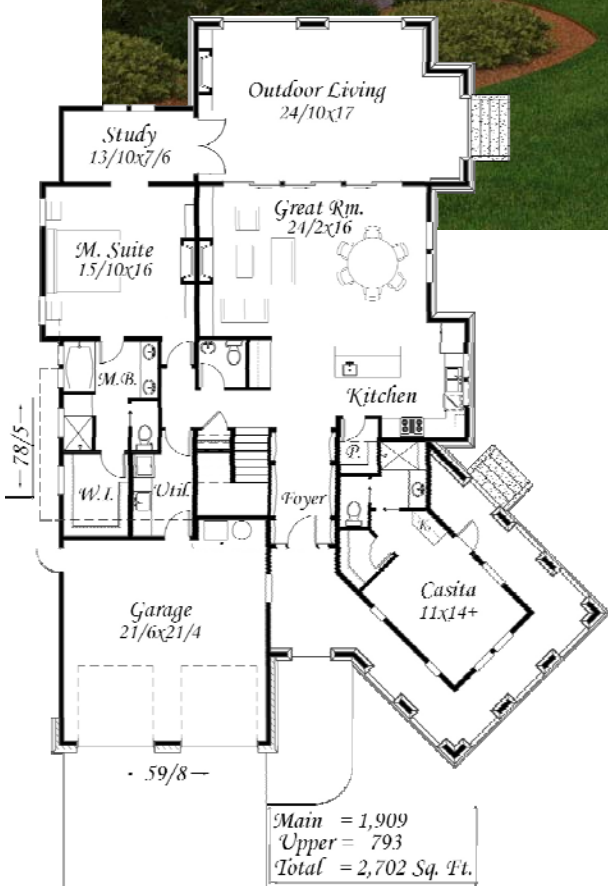


Main = 1,909
 Upper = 793
 Total = 2,702 Sq. Ft.

M-2702-A
 1909 sq. ft main
 1793 sq. ft upper
 59/8 x 78/5





Main = 1,909
 Upper = 793
 Total = 2,702 Sq. Ft.

M-2702-A
 1909 sq. ft main
 1793 sq. ft upper
 59/8 x 78/5





Main = 1,909
 Upper = 793
 Total = 2,702 Sq. Ft.



M-2702-A
 1909 sq. ft main
 1793 sq. ft upper
 59/8 x 78/5



M-2702-A
1909 sq. ft main
1793 sq. ft upper
59/8 x 78/5