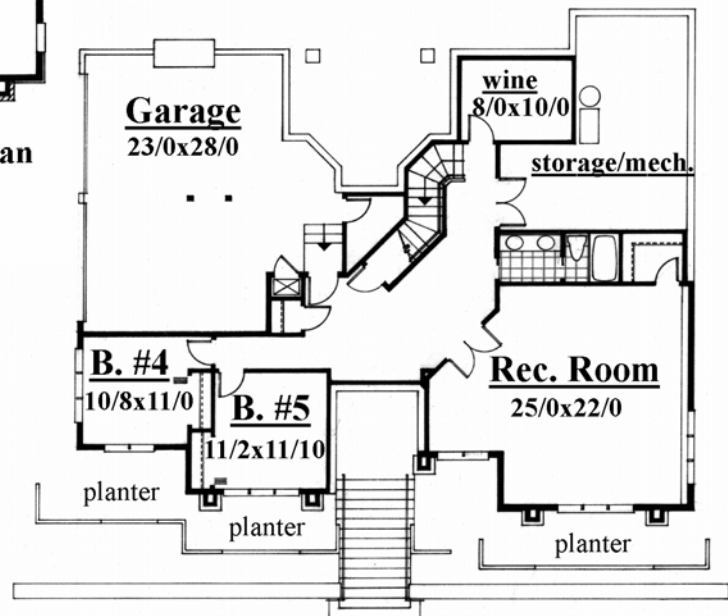
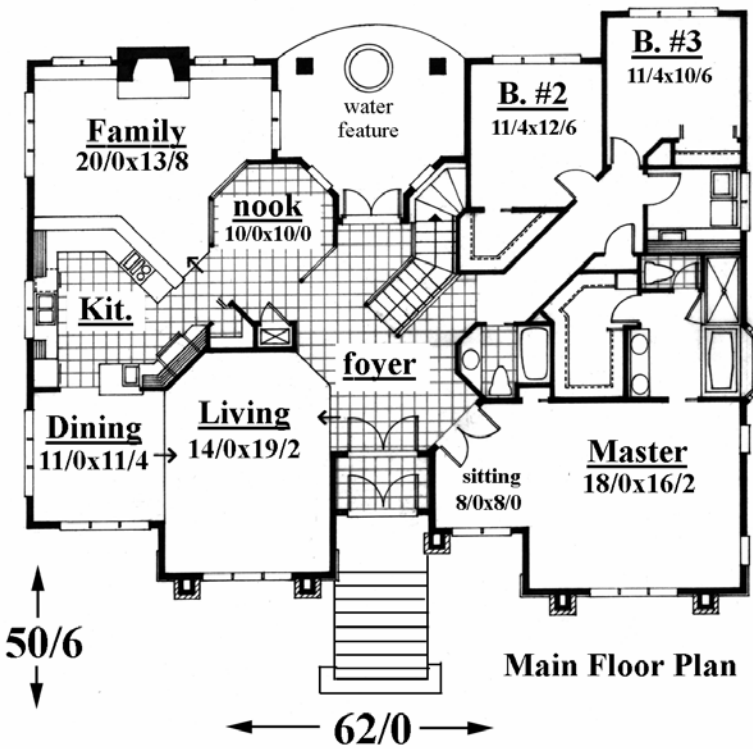


Plan
MSAP-3849



Plan
MSAP-3849

62/0 wide x 50/6 deep
3,849 sq. ft.

"This one of a kind spectacular Prairie Style Design takes full advantage of a front as well as a side and rear view. Behold the spectacular exterior to compliment the luxurious floor plan. The Master Suite complete with sitting room faces a front view while the kitchen and family center are at the back left corner. You are greeted with a remarkable see-through foyer that leads directly through the home to the back yard and water feature. Economically designed yet spectacular this home even boasts a huge lower level with Recreation room and two spare bedrooms."