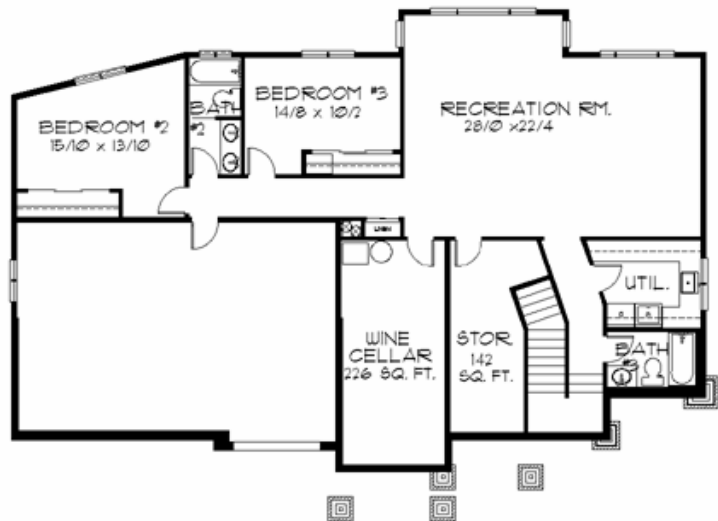
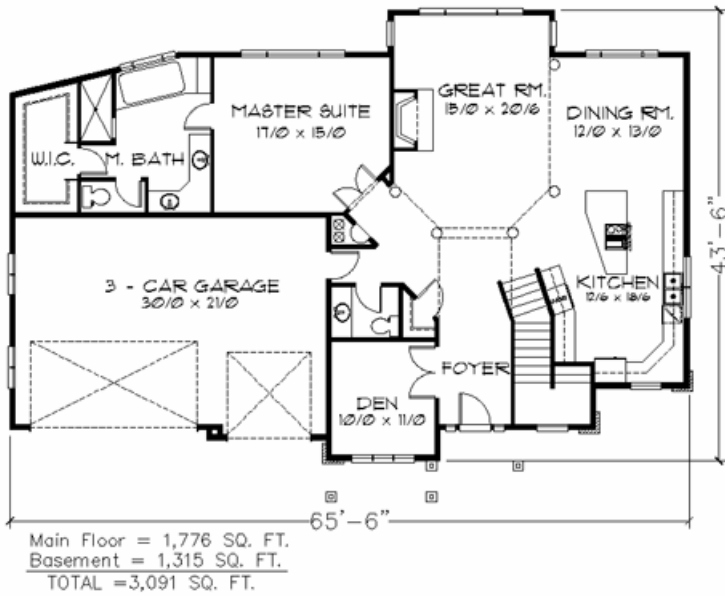


Plan
M-3091



Plan
M-3091

65/6 wide x 43/6 deep
3,091 sq. ft.

"An elegant tribute to the Arts and Crafts Style, this popular plan has been fitted with an exciting open main floor complete with a gracious Great Room, open to the view and adjacent to the gourmet sized kitchen and dining room. The Master Suite is Generous and also located on the view side. Perfect for a downhill lot the lower floor has an enormous recreation room, as well as two additional bedrooms."