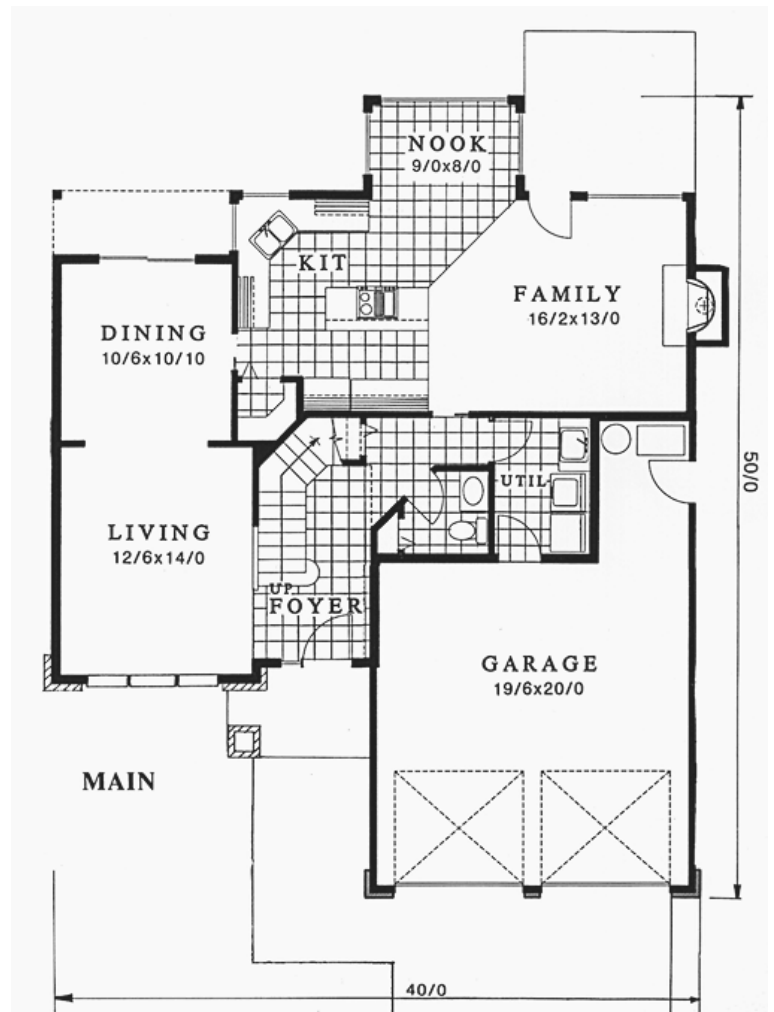
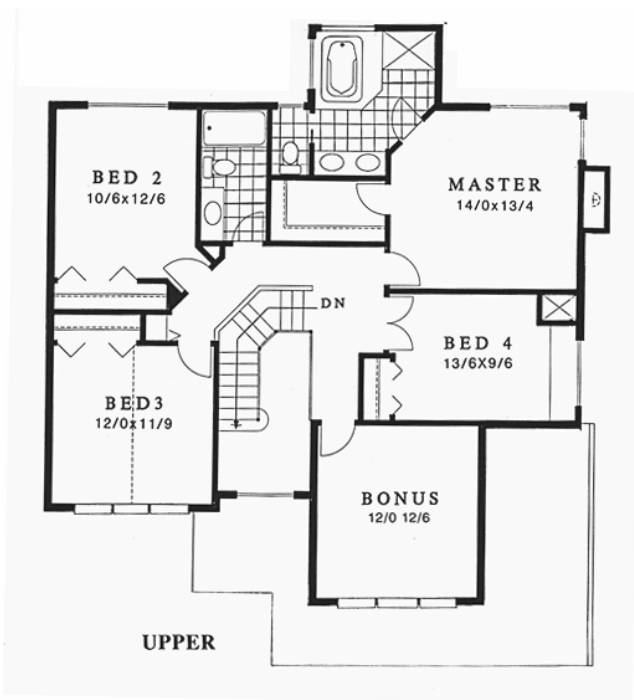


Plan
MSAP-2276



Plan
MSAP-2276
40/0 wide x 50/0 deep
2,272 sq. ft.

"This is another one of those miracle floor plans. Four bedrooms and a bonus room.. all the space you'll ever need for the kids... A Big Kitchen off the family room, and formal dining and living rooms at the front of the home. Top this off with an award winning Prairie style exterior and you have a very strong package.... I am particularly proud of this design.. It has made easy living a reality at a budget price...."