

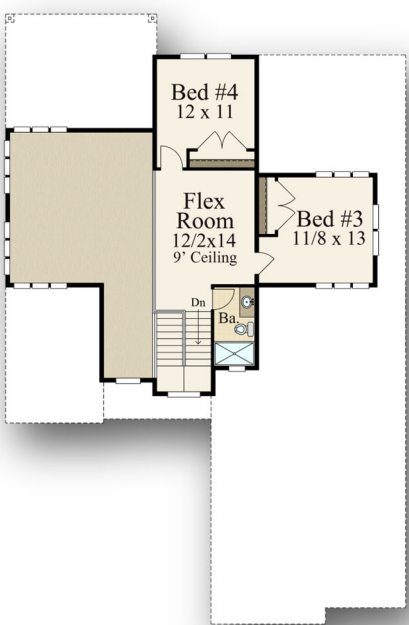


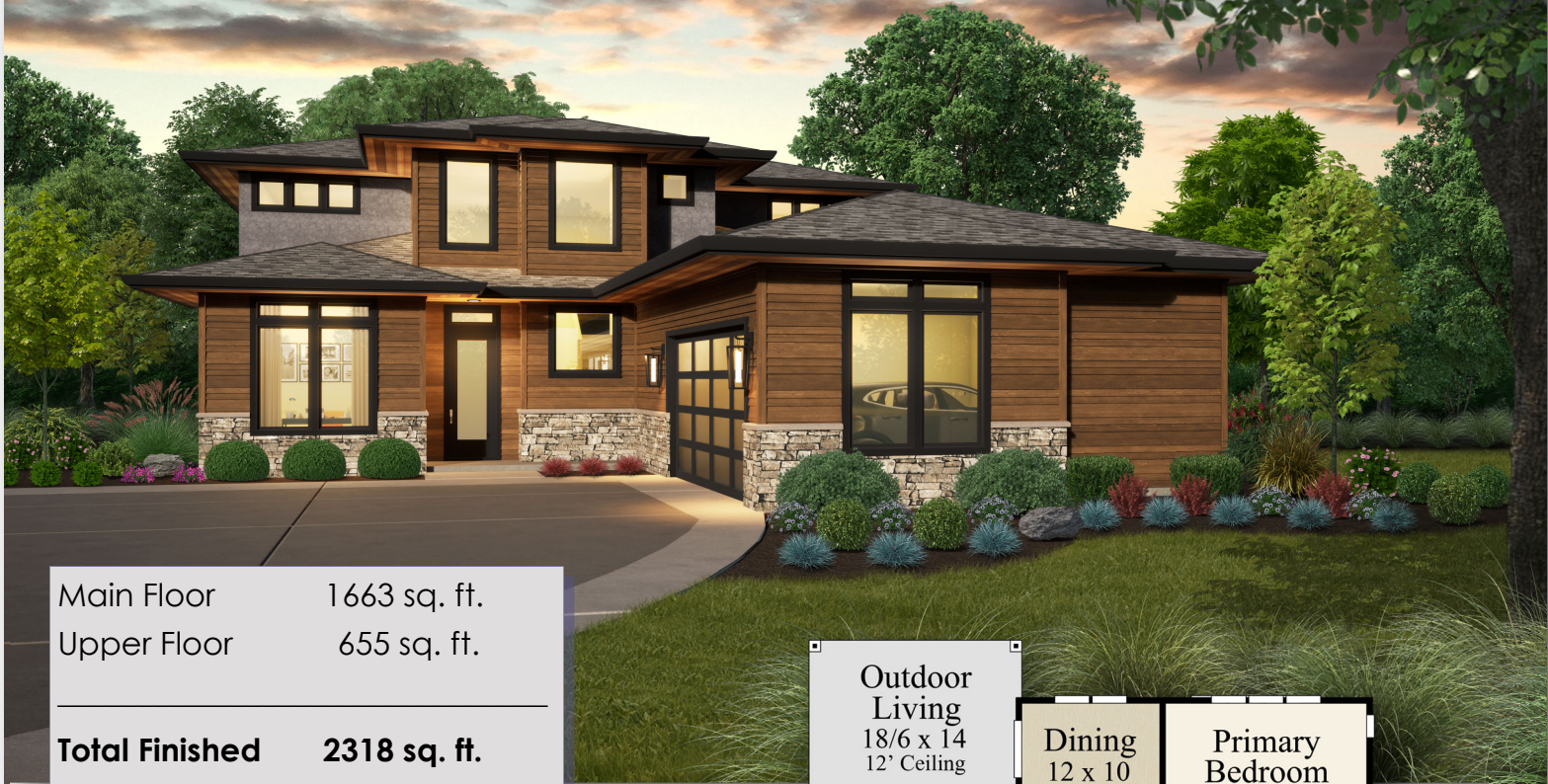
"Gold Bar" MSAP-2318



Main Floor 1663 sq. ft.
Upper Floor 655 sq. ft.

Total Finished 2318 sq. ft.
49/0 wide x 75/0 deep





Main Floor 1663 sq. ft.
Upper Floor 655 sq. ft.

Total Finished 2318 sq. ft.
49/0 wide x 75/0 deep

