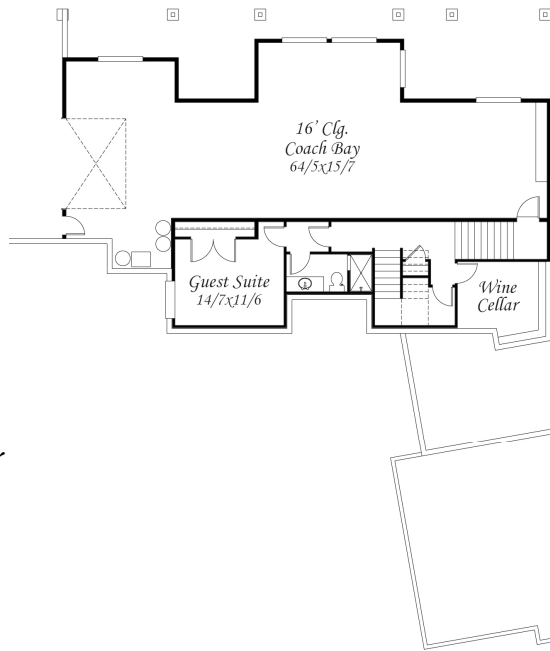
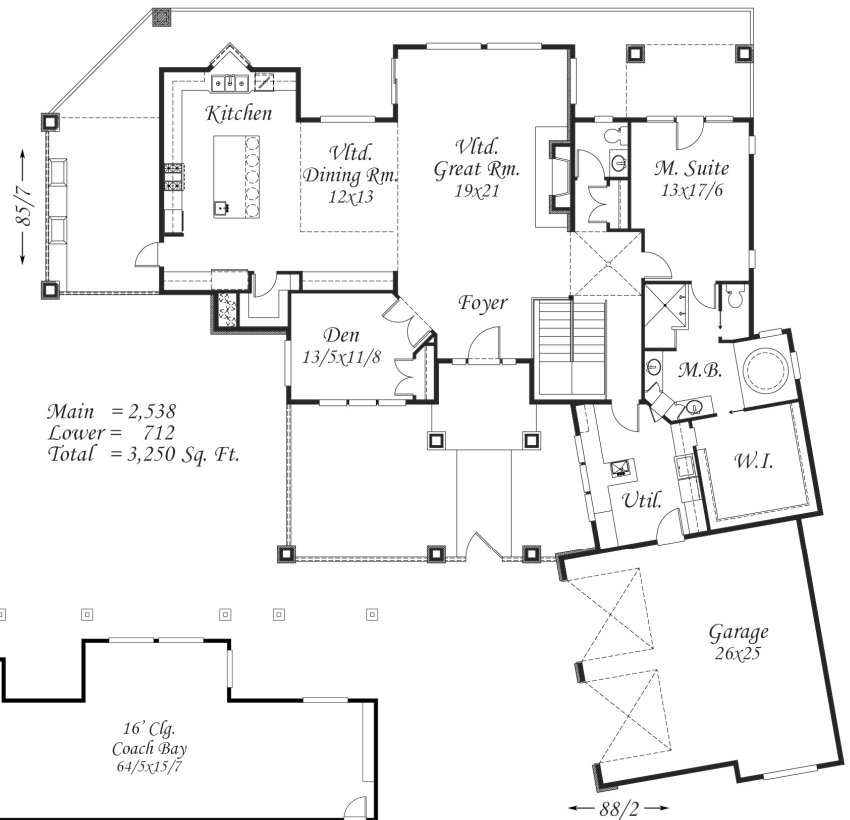




*M-3250Grif*  
*88/2 x 85/7*  
*3250 sq. ft.*

*This is a spectacular home design featuring an fantastic Open Beamed Trussed Great Room with a magnificent kitchen and formal dining nearby. This home utilizes many "Not So Big" Patterns from shared spaces, the walk-thru multi-use rooms to the human scaling of the dramatic yet intimate exterior. The Master Suite is perfect with a beautiful master bath featuring a Japanese Soaking tub and a pass thru to the utility room. The huge wardrobe will give you all the storage you could ever need. There is a dog wash in the utility room as well. Downstairs is a perfect guest suite, wine cellar and a huge RV Coach Bay. A unique home that takes advantage of views in many directions*









*Mark Stewart Home Design*